



Elaine L. Wallace, RMC, CMR
Borough Clerk

BOROUGH OF CAPE MAY POINT

POST OFFICE BOX 490
CAPE MAY POINT, NJ 08212
(609) 884-8468 / FAX: 609-884-1732
www.capemaypoint.org

Robert J. Moffatt, VMD

Mayor

*Commissioner Public Safety
& Public Affairs*

Anita vanHeeswyk

Deputy Mayor

Commissioner Revenue & Finance

Catherine Busch

Commissioner Public Works,

Parks & Public Property

Edmund Grant

Borough Administrator

Request for Quotes(RFQ)

RFQ — BOROUGH OF CAPE MAY POINT. The Borough of Cape May Point, Cape May County, is seeking professional proposals for a surveying service. The Borough and the CMP Taxpayers Association are collectively doing this project. The site will be utilized for a veteran's memorial. Deadline to submit proposals –August 18, 2023 by 11:00 AM. Faxes accepted. Submit to the attention of the Municipal Clerk, 215 Lighthouse Ave., PO Box 490, Cape May Point, NJ 08212 or ewallace@capemaypoint.org. Inquiries and complete RFQ submission guidelines are available on the Borough's website at www.capemaypoint.org or by contacting the Municipal Clerk at 609-884-8468.

Survey Proposal Request for Cape May Point Veterans Memorial

Site: On land owned by the Borough of Cape May Point Encompassing Lake Lilly, the portion bounded on: North, by Oak Avenue; East, by East lake Drive; South, by Lake Lilly; and West, by Cape Avenue. (see attached drawings)

Scope:

- Establish a benchmark on site, record location on drawing, and reference to NAVD 1988
- Provide ALTA/ACSM Boundary survey
- Identify easements, adjoining streets including legal R.O.W. and edge of pavements, and utilities.
- Show any site improvements, including fences, in-ground vaults/manholes, utility infrastructure, flagpole, walkways, hydrants, site furnishings, planted trees (over 3-in. dia.)
- Show edge of lake water line and water surface elevation
- Include spot elevations at key features and generally sufficient for establishing a grading plan
- Indicate flood zone classification
- Provide (3) sealed prints and digital pdf.

Vendor List

Kates Schneider Engineering

info@KSECivil.com

Cape Land Surveying

steve@capesurvey.com

hdg Engineering

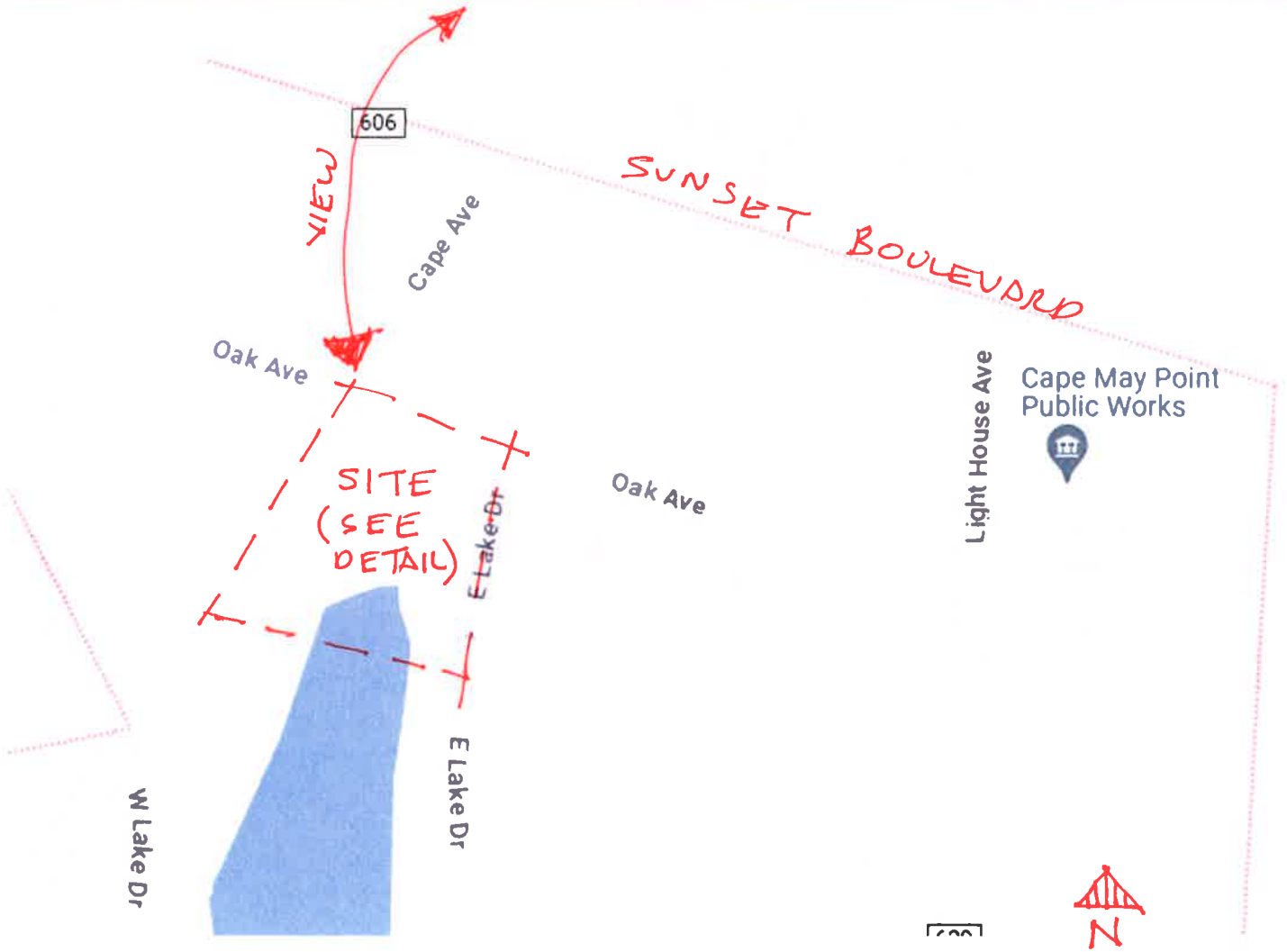
hdg-nj.com

Gibson Associates

gibsonassoc.com

James R. Boney Associates

jboney@comcast.net



DETAIL PLAN OF SURVEY SCOPE

